



## The MSMR Annual Meeting of Members

June 24, 2016

Colonnade Hotel, Boston, MA

10:00 am to noon

### Call to order

### Agenda

- Call to order – Ronald Farquhar – Vice Chair
- Recognition of Sponsors
- Approval of minutes from the 2015 Annual Meeting
- Election of new members
- Election of Board members – two-year terms
- Chairman’s report – Year’s actions and progress on *The MSMR Strategic Plan*
- Auditor’s report
- Financial condition and budget
- Legislation – Patrick Huntington, JD, Massachusetts Bay Associates
- Major projects and goals for FY2017
- Student Competition results
- New business from the floor

### Thanks to Our Generous Sponsors

#### **Gold**



#### **Silver Sponsor**



#### **Bronze Sponsors**



Founding members of Partners Healthcare



---

**Copper Sponsors**



**MASSACHUSETTS  
MEDICAL SOCIETY**

---

**Friend Sponsors**

**Paul T. Clark, Esq.  
Patricia A. Preisig, PhD**



**Division of Comparative Medicine**

---

## Levenson Award Sponsor



---

### Meeting minutes from the prior Annual Meeting of Members

Please review the minutes at this link: <http://msmr.org/?p=840> or <http://msmr.org/materials-for-the-2016-annual-meeting-of-members-business-session/>

### Election of New Members

- Artugen Therapeutics Ltd.
- bluebird bio
- Clear H<sub>2</sub>O
- Digital Paradigms, Inc.
- Merrimack Pharmaceuticals
- Spero Therapeutics
- Acton-Boxborough Regional High School
- Assabet Valley Regional Technical High School
- Gloucester Biotechnology Academy
- Medford Vocational Technical High School
- Norfolk County Agricultural High School
- Worcester Technical High School

### Election of Board Members – 2-year terms

- Charles T. Alagero, Esq. – Massachusetts Medical Society
- Thomas J. Andrews, MS – Alexandria Real Estate Equities
- William Barbo, MBA, MS – Charles River Laboratories
- Lynne H. Brum – Metabolix
- Paul T. Clark, Esq. – Clark & Elbing, LLP
- James G. Fox, DVM – Massachusetts Institute of Technology
- Kathryn Holthaus, MS, MA – Brigham and Women's Hospital
- Lynne R. Jackson, DVM – Mispro Biotech Services
- Kirby L. Johnson, PhD – Tufts University
- Mark H. Johnson, MBA – AbbVie
- David Lee-Parritz, DVM – Tufts Cummings Veterinary School
- Marsha A Moses, PhD – Boston Children's Hospital
- Patricia Ann Preisig, PhD – Yale University
- Deborah Ann Siwik, PhD – Boston University

### Chairman's Report – Progress on The MSMR Strategic Plan

#### ORGANIZATION

##### **1. Establish new Board committees.**

- a. Membership Development Committee specifically for member identification, cultivation and recruitment.
- b. Program Committee (to advise and assist the Biomedical Research Advisory Committee (BRAC) and provide special expertise, experience and reach that may not be incorporated into the BRAC

- c. Awards Committee (e.g., Biomedical Research Day honorees, Annual Meeting speakers)
- d. Government Affairs Committee to create actions and messaging around bills in the legislatures and activities of interest in the state executive branches.
- e. Finance Committee
- f. Education Committee (Grades 6-12, community colleges)
- g. Public Affairs Committee
- h. Board development, recruit one education specialist and one ranking individual in the medical device field or CRO as Board seats become available, to be followed by a vendor or affiliate member.

PROGRAM DEVELOPMENT (MEMBER SERVICES/COLLABORATION) Strategic Goal: Be the primary regional resource for biomedical animal lab programs and be a valued resource in the biomedical research field

- 2. **Establish a mechanism for bringing ideas to our current committee for developing new programs.**
- 3. **Develop two new workshops, two to four new webinars and one new on-line course.**
- 4. **Continue to seek collaborations for events and for buy-sell opportunities.**
- 5. **Hire a program development specialist.**

BUSINESS DEVELOPMENT (MESSAGING, COLLABORATION, RESOURCES) Strategic Goals: (i) Be the primary regional resource for biomedical animal lab programs and be a valued resource in the biomedical research field. (ii) Be a valued regional resource for public awareness and legislative support in the biomedical research field. (iii) Be a valued regional resource for enhanced national collaboration.

- 6. **Find ways to market “IACUCs & IBCs” training better and more broadly.**
- 7. **Hire a business development specialist.**
- 8. **Work with SUBR and its partners on strong messaging.**

EDUCATION Strategic Goal: Be a valued regional K – 16 resource for learning about biomedical research.

- 9. **Hire an education specialist to support all of MSMR’s educational mission.**
- 10. **Create a membership category for secondary schools and two-year colleges.**
- ① **Change MSMR’s name (to the New England Society for Medical Research (NESMR)).**
  - ① Regardless the name, we will do a complete re-make of our website to reflect the best current practices in on-line presence.

*New Member Category description:*

High School Member No annual fee

- *MSMR e-UPDATE*®
- MSMR Annual Meeting of Members (2 faculty)
- MSMR Laboratory Animal Enrichment Symposium (2 faculty)
- Biomedical Research Day Honors (2 faculty)
- No-fee registration On-line IACUC Member training program (1 faculty)
- No-fee registration at MSMR-produced webinars (2 faculty)
- Representation on the MSMR Education Committee (1 faculty)
- Student participation on a space-available basis

Auditor’s Report – Daniel F. Friel, CPA

Please see below

THE MASSACHUSETTS SOCIETY FOR MEDICAL RESEARCH, INC.  
FINANCIAL STATEMENTS  
FOR THE YEARS ENDED JUNE 30, 2015 AND 2014

THE MASSACHUSETTS SOCIETY FOR MEDICAL RESEARCH, INC.

JUNE 30, 2015 AND 2014

\*\*\*\*\*

CONTENTS

|  | <u>PAGE</u> |
|--|-------------|
| Independent Auditor's Report .....   | 1           |
| Statements of Financial Position<br>as of June 30, 2015 and 2014 .....                                 | 2           |
| Statements of Activities and Changes in Net Assets<br>for the Years Ended June 30, 2015 and 2014 ..... | 3           |
| Statement of Functional Expenses<br>for the Year Ended June 30, 2015 .....                             | 4           |
| Statement of Functional Expenses<br>For the Year Ended June 30, 2014 .....                             | 5           |
| Statements of Cash Flows<br>for the Years Ended June 30, 2015 and 2014 .....                           | 6           |
| Notes to Financial Statements - June 30, 2015 and 2014 .....   | 7-8         |

**DANIEL F. FRIEL, CPA, P.C.**

CERTIFIED PUBLIC ACCOUNTANT  
404 WYMAN STREET - SUITE 380  
WALTHAM, MA 02451-1212

(781) 890-3150 • FAX (781) 890-0268

email: dan@frielpcpa.com

INDEPENDENT AUDITOR'S REPORT

To the Board of Directors  
The Massachusetts Society for  
Medical Research, Inc.  
North Chelmsford, MA 01863

I have audited the accompanying financial statements of the Massachusetts Society for Medical Research, Inc. (a non-profit organization) which comprise the statement of financial position as of June 30, 2015 and 2014, and the related statements of activities, functional expenses, and cash flows for the years then ended, and the related notes to the financial statements.

**Management's Responsibility for the Financial Statements**

Management is responsible for the preparation and fair presentation of these financial statements in accordance with accounting principles generally accepted in the United States of America; this includes the design, implementation, and maintenance of internal control relevant to the preparation and fair presentation of financial statements that are free from material misstatement, whether due to fraud or error.

**Auditor's Responsibility**

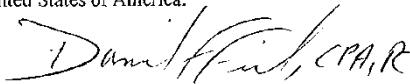
My responsibility is to express an opinion on these financial statements based on my audit. I conducted my audit in accordance with auditing standards generally accepted in the United States of America. Those standards require that I plan and perform the audit to obtain reasonable assurance about whether the financial statements are free of material misstatement.

An audit involves performing procedures to obtain audit evidence about the amounts and disclosures in the financial statements. The procedures selected depend on the auditor's judgment, including the assessment of the risks of material misstatement of the financial statements, whether due to fraud or error. In making those risk assessments, the auditor considers internal control relevant to the entity's preparation and fair presentation of the financial statements in order to design audit procedures that are appropriate in the circumstances, but not for the purpose of expressing an opinion on the effectiveness of the entity's internal control. Accordingly, I express no such opinion. An audit also includes evaluating the appropriateness of accounting policies used and the reasonableness of significant accounting estimates made by management, as well as evaluating the overall presentation of the financial statements.

I believe that the audit evidence I have obtained is sufficient and appropriate to provide a basis for my audit opinion.

**Opinion**

In my opinion, the financial statements referred to above present fairly, in all material respects, the financial position of the Massachusetts Society for Medical Research, Inc. as of June 30, 2015 and 2014, and the changes in its net assets and its cash flows for the years then ended in accordance with accounting principles generally accepted in the United States of America.



December 8, 2015

THE MASSACHUSETTS SOCIETY FOR MEDICAL RESEARCH, INC.

STATEMENTS OF FINANCIAL POSITION

JUNE 30, 2015 AND 2014

| ASSETS                                  | <u>2015</u>             | <u>2014</u>             |
|---|-------------------------|-------------------------|
| Current assets:                         |                         |                         |
| Cash                                    | \$288,377               | \$261,809               |
| Accounts receivable                     | 68,175                  | 5,830                   |
| Prepaid expenses                        | <u>1,681</u>            | <u>6,181</u>            |
| Total current assets                    | <u>358,233</u>          | <u>273,820</u>          |
| Property and Equipment:                 |                         |                         |
| Furniture and fixtures                  | 10,048                  | 10,048                  |
| Office equipment                        | <u>36,281</u>           | <u>36,281</u>           |
| Total                                   | 46,329                  | 46,329                  |
| Less: Accumulated depreciation          | <u>(46,329)</u>         | <u>(46,329)</u>         |
| Net property and equipment              | <u>0</u>                | <u>0</u>                |
| <b>TOTAL ASSETS</b>                     | <b><u>\$358,233</u></b> | <b><u>\$273,820</u></b> |
| LIABILITIES AND NET ASSETS              |                         |                         |
| Current liabilities:                    |                         |                         |
| Accounts payable                        | \$ 26,498               | \$ 17,502               |
| Accrued salaries                        | <u>17,760</u>           | <u>17,338</u>           |
| Total current liabilities               | <u>44,258</u>           | <u>34,840</u>           |
| Net assets:                             |                         |                         |
| Unrestricted                            | 307,975                 | 234,980                 |
| Temporarily restricted                  | <u>6,000</u>            | <u>4,000</u>            |
| Total net assets                        | <u>313,975</u>          | <u>238,980</u>          |
| <b>TOTAL LIABILITIES AND NET ASSETS</b> | <b><u>\$358,233</u></b> | <b><u>\$273,820</u></b> |

See accompanying notes and independent auditor's report.



THE MASSACHUSETTS SOCIETY FOR MEDICAL RESEARCH, INC.  
 STATEMENTS OF ACTIVITIES AND CHANGES IN NET ASSETS  
 FOR THE YEARS ENDED JUNE 30, 2015 AND 2014

|  | <u>Unrestricted</u> | <u>Temporarily<br/>Restricted</u> | <u>2015<br/>Total</u> | <u>2014<br/>Total</u> |
|--|---------------------|-----------------------------------|-----------------------|-----------------------|
| <b>Support and revenues:</b>   |                     |                                   |                       |                       |
| <b>Contributions:</b>  |                     |                                   |                       |                       |
| Founder  | \$ 55,000           | \$ 0                              | \$ 55,000             | \$ 60,000             |
| Great benefactor   | 129,900             | 0                                 | 129,900               | 109,900               |
| Sponsor  | 57,000              | 0                                 | 57,000                | 57,000                |
| Member   | 72,950              | 0                                 | 72,950                | 75,950                |
| Other  | <u>6,776</u>        | <u>0</u>                          | <u>6,776</u>          | <u>8,350</u>          |
| Total  | 321,626             | 0                                 | 321,626               | 311,200               |
| <br>   |                     |                                   |                       |                       |
| Grants   | 27,000              | 11,000                            | 38,000                | 46,000                |
| Workshops and conferences  | 172,226             | 0                                 | 172,226               | 82,588                |
| Annual meeting, net of costs   | 9,186               | 0                                 | 9,186                 | 4,650                 |
| 60th Anniversary Gala, net of costs  | 0                   | 0                                 | 0                     | 10,228                |
| Consulting fees  | 4,650               | 0                                 | 4,650                 | 2,500                 |
| Interest income  | <u>1,538</u>        | <u>0</u>                          | <u>1,538</u>          | <u>772</u>            |
|  | 536,226             | 11,000                            | 547,226               | 457,938               |
| <br>   |                     |                                   |                       |                       |
| <i>Net assets released from restrictions:<br/>satisfaction of program restrictions</i> | <u>9,000</u>        | <u>(9,000)</u>                    | <u>0</u>              | <u>0</u>              |
| Total revenues   | <u>545,226</u>      | <u>2,000</u>                      | <u>547,226</u>        | <u>457,938</u>        |
| <br><b>Expenses:</b>   |                     |                                   |                       |                       |
| <b>Program services:</b>   |                     |                                   |                       |                       |
| Member services  | 88,889              | 0                                 | 88,889                | 88,073                |
| Legislative matters  | 24,523              | 0                                 | 24,523                | 27,967                |
| Educational outreach and public relations  | <u>284,159</u>      | <u>0</u>                          | <u>284,159</u>        | <u>240,638</u>        |
| Total program services   | 397,571             | 0                                 | 397,571               | 356,678               |
| <br>   |                     |                                   |                       |                       |
| Management and general   | 50,809              | 0                                 | 50,809                | 51,918                |
| New member development   | <u>23,851</u>       | <u>0</u>                          | <u>23,851</u>         | <u>2,801</u>          |
| Total expenses   | <u>472,231</u>      | <u>0</u>                          | <u>472,231</u>        | <u>411,397</u>        |
| <br>   |                     |                                   |                       |                       |
| Increase (decrease) in net assets  | 72,995              | 2,000                             | 74,995                | 46,541                |
| <br>   |                     |                                   |                       |                       |
| Net assets, beginning of year  | <u>234,980</u>      | <u>4,000</u>                      | <u>238,980</u>        | <u>192,439</u>        |
| <br>   |                     |                                   |                       |                       |
| NET ASSETS, END OF YEAR  | <u>\$307,975</u>    | <u>\$ 6,000</u>                   | <u>\$313,975</u>      | <u>\$238,980</u>      |

See accompanying notes and independent auditor's report.

THE MASSACHUSETTS SOCIETY FOR MEDICAL RESEARCH, INC.

STATEMENTS OF FUNCTIONAL EXPENSES

FOR THE YEAR ENDED JUNE 30, 2015  
(WITH COMPARATIVE TOTALS FOR THE YEAR ENDED JUNE 30, 2014)

|                            | Program Services:  |                        |  | Total Program<br>Services | Management<br>and General | New Member<br>Development | 2015<br>Total    | 2014<br>Total    |
|----------------------------|--------------------|------------------------|--|---------------------------|---------------------------|---------------------------|------------------|------------------|
|                            | Member<br>Services | Legislative<br>Matters | Educational Outreach<br>& Public Relations |                           |                           |                           |                  |                  |
| Personnel costs:           |                    |                        |  |                           |                           |                           |                  |                  |
| Salaries                   | \$ 60,536          | \$ 4,443               | \$ 95,707                                  | \$160,686                 | \$ 21,289                 | \$ 3,147                  | \$185,122        | \$180,928        |
| Payroll taxes              | 4,942              | 363                    | 7,814                                      | 13,119                    | 1,738                     | 257                       | 15,114           | 15,733           |
| Health Insurance           | 4,501              | 330                    | 7,115                                      | 11,946                    | 1,583                     | 234                       | 13,763           | 12,631           |
| Retirement                 | 967                | 70                     | 1,529                                      | 2,566                     | 340                       | 51                        | 2,957            | 1,800            |
| Total personnel costs      | 70,946             | 5,206                  | 112,165                                    | 188,317                   | 24,950                    | 3,689                     | 216,956          | 211,092          |
| Audit fee                  | 0                  | 0                      | 0  | 0                         | 4,800                     | 0                         | 4,800            | 6,000            |
| Bookkeeping fees           | 0                  | 0                      | 0  | 0                         | 2,547                     | 0                         | 2,547            | 2,694            |
| Donations                  | 0                  | 0                      | 770  | 770                       | 0                         | 0                         | 770              | 2,524            |
| Equipment leases           | 0                  | 0                      | 0  | 0                         | 5,820                     | 0                         | 5,820            | 5,820            |
| Insurance                  | 0                  | 0                      | 0  | 0                         | 6,383                     | 0                         | 6,383            | 5,674            |
| Lobbying fees              | 0                  | 18,000                 | 0  | 18,000                    | 0                         | 0                         | 18,000           | 18,438           |
| Office rent                | 6,571              | 482                    | 10,389                                     | 17,442                    | 2,310                     | 342                       | 20,094           | 19,769           |
| Office expenses            | 5,424              | 398                    | 8,575                                      | 14,397                    | 1,907                     | 283                       | 16,587           | 8,661            |
| Postage and delivery       | 486                | 36                     | 769  | 1,291                     | 170                       | 26                        | 1,487            | 1,931            |
| Printing costs             | 0                  | 0                      | 575  | 575                       | 0                         | 0                         | 575              | 1,929            |
| Repairs and maintenance    | 826                | 61                     | 1,306                                      | 2,193                     | 291                       | 43                        | 2,527            | 635              |
| Science writing consultant | 0                  | 0                      | 18,026                                     | 18,026                    | 0                         | 0                         | 18,026           | 19,216           |
| Strategic planning fees    | 0                  | 0                      | 0  | 0                         | 0                         | 19,229                    | 19,229           | 0                |
| Student awards             | 0                  | 0                      | 2,566                                      | 2,566                     | 0                         | 0                         | 2,566            | 1,600            |
| Telephone                  | 1,504              | 110                    | 2,378                                      | 3,992                     | 529                       | 78                        | 4,599            | 5,727            |
| Travel costs               | 2,305              | 169                    | 3,644                                      | 6,118                     | 811                       | 119                       | 7,048            | 7,883            |
| Utilities                  | 827                | 61                     | 1,307                                      | 2,195                     | 291                       | 42                        | 2,528            | 2,347            |
| Web-site costs             | 0                  | 0                      | 800  | 800                       | 0                         | 0                         | 800              | 1,261            |
| Workshop costs             | 0                  | 0                      | 120,889                                    | 120,889                   | 0                         | 0                         | 120,889          | 88,196           |
| <b>TOTAL EXPENSES</b>      | <b>\$ 88,889</b>   | <b>\$ 24,523</b>       | <b>\$284,159</b>                           | <b>\$397,571</b>          | <b>\$ 50,809</b>          | <b>\$ 23,851</b>          | <b>\$472,231</b> | <b>\$411,397</b> |

See accompanying notes and independent auditor's report.

THE MASSACHUSETTS SOCIETY FOR MEDICAL RESEARCH, INC.

STATEMENTS OF FUNCTIONAL EXPENSES

FOR THE YEAR ENDED JUNE 30, 2014  
(WITH COMPARATIVE TOTALS FOR THE YEAR ENDED JUNE 30, 2013)

|                            | Program Services:  |                        |  | Total Program<br>Services | Management<br>and General | New Member<br>Development | 2014<br>Total    | 2013<br>Total    |
|----------------------------|--------------------|------------------------|--|---------------------------|---------------------------|---------------------------|------------------|------------------|
|                            | Member<br>Services | Legislative<br>Matters | Educational Outreach<br>& Public Relations |                           |                           |                           |                  |                  |
| Personnel costs:           |                    |                        |  |                           |                           |                           |                  |                  |
| Salaries                   | \$ 61,371          | \$ 6,640               | \$ 88,854                                  | \$156,865                 | \$ 22,109                 | \$ 1,954                  | \$180,928        | \$174,624        |
| Payroll taxes              | 5,337              | 577                    | 7,726                                      | 13,640                    | 1,923                     | 170                       | 15,733           | 15,247           |
| Health Insurance           | 4,284              | 464                    | 6,203                                      | 10,951                    | 1,544                     | 136                       | 12,631           | 16,866           |
| Retirement                 | 611                | 66                     | 884  | 1,561                     | 220                       | 19                        | 1,800            | 0                |
| Total personnel costs      | 71,603             | 7,747                  | 103,667                                    | 183,017                   | 25,796                    | 2,279                     | 211,092          | 206,737          |
| Audit fee                  | 0                  | 0                      | 0  | 0                         | 6,000                     | 0                         | 6,000            | 4,500            |
| Bookkeeping fees           | 0                  | 0                      | 0  | 0                         | 2,694                     | 0                         | 2,694            | 1,963            |
| Donations                  | 0                  | 0                      | 2,524                                      | 2,524                     | 0                         | 0                         | 2,524            | 0                |
| Equipment leases           | 0                  | 0                      | 0  | 0                         | 5,820                     | 0                         | 5,820            | 5,820            |
| Insurance                  | 0                  | 0                      | 0  | 0                         | 5,674                     | 0                         | 5,674            | 3,669            |
| Lobbying fees              | 0                  | 18,438                 | 0  | 18,438                    | 0                         | 0                         | 18,438           | 19,969           |
| Office rent                | 6,706              | 726                    | 9,709                                      | 17,141                    | 2,416                     | 212                       | 19,769           | 19,769           |
| Office expenses            | 3,481              | 377                    | 3,439                                      | 7,297                     | 1,254                     | 110                       | 8,661            | 6,824            |
| Postage and delivery       | 655                | 71                     | 948  | 1,674                     | 236                       | 21                        | 1,931            | 1,217            |
| Printing costs             | 0                  | 0                      | 1,929                                      | 1,929                     | 0                         | 0                         | 1,929            | 474              |
| Repairs and maintenance    | 215                | 23                     | 312  | 550                       | 78                        | 7                         | 635              | 805              |
| Science writing consultant | 0                  | 0                      | 19,216                                     | 19,216                    | 0                         | 0                         | 19,216           | 15,362           |
| Student awards             | 0                  | 0                      | 1,600                                      | 1,600                     | 0                         | 0                         | 1,600            | 0                |
| Telephone                  | 1,943              | 210                    | 2,813                                      | 4,966                     | 700                       | 61                        | 5,727            | 7,013            |
| Travel costs               | 2,674              | 289                    | 3,871                                      | 6,834                     | 963                       | 86                        | 7,883            | 3,718            |
| Utilities                  | 796                | 86                     | 1,153                                      | 2,035                     | 287                       | 25                        | 2,347            | 2,119            |
| Web-site costs             | 0                  | 0                      | 1,261                                      | 1,261                     | 0                         | 0                         | 1,261            | 958              |
| Workshop costs             | 0                  | 0                      | 88,196                                     | 88,196                    | 0                         | 0                         | 88,196           | 69,268           |
| <b>TOTAL EXPENSES</b>      | <b>\$ 88,073</b>   | <b>\$ 27,967</b>       | <b>\$240,638</b>                           | <b>\$356,678</b>          | <b>\$ 51,918</b>          | <b>\$ 2,801</b>           | <b>\$411,397</b> | <b>\$370,185</b> |

See accompanying notes and independent auditor's report.

THE MASSACHUSETTS SOCIETY FOR MEDICAL RESEARCH, INC.

STATEMENTS OF CASH FLOWS

FOR THE YEARS ENDED JUNE 30, 2015 AND 2014

|  | <u>2015</u>      | <u>2014</u>      |
|--|------------------|------------------|
| Cash provided by (used for) operating activities:  |                  |                  |
| Increase (decrease) in net assets  | \$ 74,995        | \$ 46,541        |
| Adjustment to reconcile change in net assets to net cash provided by operating activities: |                  |                  |
| Accounts receivable  | (62,345)         | 19,170           |
| Prepaid expense  | 4,500            | 12,323           |
| Accounts payable and accrued expenses  | <u>9,418</u>     | <u>6,322</u>     |
| Net cash provided by (used for) operating activities                                       | 26,568           | 84,356           |
| Cash, beginning of period  | <u>261,809</u>   | <u>177,453</u>   |
| CASH, END OF PERIOD  | <u>\$288,377</u> | <u>\$261,809</u> |

See accompanying notes and independent auditor's report.

THE MASSACHUSETTS SOCIETY FOR MEDICAL RESEARCH, INC.

NOTES TO FINANCIAL STATEMENTS

JUNE 30, 2015 AND 2014

**NOTE 1 - OPERATIONS:**

Operations - The Massachusetts Society for Medical Research, Inc. (the "Organization"), is a non-profit corporation which promotes research in the biosciences and fosters the health and well-being of humans, animals, and the environment by improving science literacy, and nurturing workforce preparedness in the biosciences.

**NOTE 2 - SUMMARY OF SIGNIFICANT ACCOUNTING POLICIES:**

The following is a summary of significant accounting policies.

Net Assets - Net assets of the Organization are classified as follows:

- Unrestricted net assets are the funds available to the organization to fund operations and are not subject to donor imposed stipulations.
- Temporarily restricted net assets are the funds received from donors where the donor has imposed restrictions on how the funds will be utilized by the Organization.

Contributions - Contributions (also referenced internally as dues assessments) are recognized at the time a donor makes an unconditional promise to pay a stated amount to the Organization. Contributions are classified as unrestricted or temporarily restricted based upon the following criteria:

- Unrestricted Contributions - These amounts are reported as unrestricted revenues and are received from donors with the understanding that funds contributed will be utilized to fund the general operating activities of the Organization.
- Temporarily Restricted Contributions - Contributions are recognized as temporarily restricted when a donor contributes a certain amount strictly for costs attributable to a specific undertaking of the organization over and above general operating activities. When the restriction imposed by the donor has been satisfied, the funded amounts are then reported as a reduction in temporarily restricted net assets and an offsetting increase in unrestricted revenues in the accompanying statements of activities. This "transfer" has the effect of reducing the Organization's temporarily restricted net assets and increasing its unrestricted net assets.

Property and Equipment - Property and equipment are recorded at cost and are depreciated using the straight-line method over five years.

Functional Expenses and Allocation of Joint Costs - The Organization allocates expenses on a functional basis among the various programs, new member development, and general and administrative costs. The allocation of personnel costs is based upon management estimates of staff time invested in each of the functional categories. Costs that are jointly allocable to more than one activity are allocated proportionately based on the proportion of personnel costs attributable to that category.

Use of Estimates - The preparation of financial statements in conformity with generally accepted accounting principles requires management to make estimates and assumptions that affect certain reported amounts and disclosures. Accordingly, actual results could differ from those estimates.

See Independent Auditor's Report

- 7 -

THE MASSACHUSETTS SOCIETY FOR MEDICAL RESEARCH, INC.

NOTES TO FINANCIAL STATEMENTS

JUNE 30, 2015 AND 2014

**NOTE 2 - SUMMARY OF SIGNIFICANT ACCOUNTING POLICIES: (continued)**

*Tax Status* - The Massachusetts Society for Medical Research, Inc. is recognized as an organization exempt from federal income tax under Section 501(c)(3) of the Internal Revenue Code. Accordingly, no provision for federal and state income taxes has been provided for in the accompanying financial statements.

**NOTE 3 - CONTRIBUTION SUPPORT:**

A substantial portion of the Organization's costs are funded through member contributions from medical institutions, corporations, and interested individuals.

During the year ended June 30, 2015, the Organization received contribution support of \$55,000 from (2) members; in 2014 the Organization received \$60,000 from (2) members.

**NOTE 4 - LEASE COMMITMENT:**

*Office Lease* - The Organization operates from an office located at 73 Princeton Street in North Chelmsford, Massachusetts through June 30, 2018. Minimum required payments due on this lease are as follows:

| <u>Year Ending<br/>June 30:</u> | <u>Amount</u> |
|---------------------------------|---------------|
| 2016                            | \$21,071      |
| 2017                            | \$21,071      |
| 2018                            | \$21,071      |

**NOTE 5 - SUBSEQUENT EVENTS:**

Transactions subsequent to the year ended June 30, 2015 have been evaluated through December 8, 2015; the date the financial statements were available to be issued. No events were noted that could have a material impact on the financial statements.

**NOTE 6 - OPEN TAX YEARS:**

The Organization files Form 990 as a non-profit corporation with the Internal Revenue Service. The filings for tax years ended June 30, 2012 through 2014 remain open to audit by the Internal Revenue Service. No audit proceedings have been initiated.

See Independent Auditor's Report

Financial Condition and Proposed FY2017 Budget  
*Financial condition June 16, 2016 and June 15, 2015*

| <u>Cash</u>                       | <u>6/16/16</u>   | <u>6/15/15</u>   |
|-----------------------------------|------------------|------------------|
| PayPal                            | \$10,534         | \$10,063         |
| Santander Checking                | \$29,013         | \$29,256         |
| <u>Santander Money Market</u>     | <u>\$222,643</u> | <u>\$230,099</u> |
| Total Cash                        | \$262,190        | \$269,418        |
| <br>                              |                  |                  |
| <u>Receivable</u>                 |                  |                  |
| Dues                              | \$26,750         | \$41,760         |
| <u>Non-Dues</u>                   | <u>\$24,017</u>  | <u>\$25,946</u>  |
| Total Receivable                  | \$50,767         | \$67,706         |
| <br>                              |                  |                  |
| <u>Total of Cash + Receivable</u> | <u>\$312,957</u> | <u>\$337,124</u> |

*Proposed FY2017 Budget*

Massachusetts Society for Medical Research  
Proposed FY17 plus FY16 Budget vs. Actuals

|  | July 2015 - June 2016 |                |   | Proposed FY17  |  |  |
|--|-----------------------|----------------|---|----------------|--|--|
|  | Total                 |                |   | Total          |  |  |
|  | Actual                | Budget         | FY16 Notes  | Budget         |  | Item and notes   |
|  | (6/1/16)              |                |   |                |  |  |
| <b>Income</b>                                      |                       |                |   |                |  | <b>Income</b>  |
| <b>40000 Income Accounts</b>                       |                       |                |   |                |  | <b>40000 Income Accounts</b>                             |
| <b>40005 Donations</b>                             |                       |                |   |                |  | <b>40005 Donations</b>                                   |
| 40006 MSMR Board of Directors                      | 6,258                 | 6,650          |   | 6,500          |  | 40006 MSMR Board of Directors                            |
| 40007 All Other Individuals                        | 1,900                 | 900            |   | 900            |  | 40007 All Other Individuals (one-time former Board gift) |
| <b>Total 40005 Donations</b>                       | <b>8,158</b>          | <b>7,550</b>   |   | <b>7,400</b>   |  | <b>Total 40005 Donations</b>                             |
| <b>40015 Foundation Grant Income</b>               |                       |                |   |                |  | <b>40015 Foundation Grant Income</b>                     |
| 40016 Restricted                                   | 14,000                | 14,000         |   | 14,000         |  | 40016 Restricted   |
| 40017 Non-Restricted                               | 27,000                | 25,000         |   | 25,000         |  | 40017 Non-Restricted                                     |
| <b>Total 40015 Foundation Grant Income</b>         | <b>41,000</b>         | <b>39,000</b>  |   | <b>39,000</b>  |  | <b>Total 40015 Foundation Grant Income</b>               |
| <b>40025 Member Dues</b>                           |                       |                |   |                |  | <b>40025 Member Dues</b>                                 |
| 40100 Founder                                      | 55,000                | 55,000         | This could be misleading: \$25K was a late payment from last year | 30,000         |  | 40100 Founder  |
| 40200 Great Benefactor                             | 119,900               | 109,900        |   | 114,000        |  | 40200 Great Benefactor                                   |
| 40300 Sponsor                                      | 58,600                | 68,000         |   | 58,600         |  | 40300 Sponsor  |
| 40400 Member                                       | 54,400                | 76,500         |   | 70,000         |  | 40400 Member   |
| <b>Total 40025 Member Dues</b>                     | <b>287,900</b>        | <b>309,400</b> |   | <b>272,600</b> |  | <b>Total 40025 Member Dues</b>                           |
| <b>40027 Wksp. Rev., Conf., Annual Meet.</b>       |                       |                |   |                |  | <b>40027 Wksp. Rev., Conf., Annual Meet.</b>             |
| 2015-08 Rev - IACUCs and IBCs                      |                       | 4,000          |   | 0              |  | 2017 Rev - IACUCs and IBCs                               |
| 2016 Rev - New On-line Course (Intro to IBCs)      |                       | 6,000          | Will be Introduction to IBCs, Q3 or Q4, CY16                      | 6,000          |  | 2017 Rev - New On-line Course (Intro to IBCs)            |
| 2016 Rev - New Webinar #1 -                        |                       | 2,500          |   | 2,500          |  | 2017 Rev - New Webinar #1 -                              |
| 2016 Rev - New Webinar #2                          |                       | 2,500          |   | 0              |  | 2017 Rev - New Webinar #2 - defer                        |
| 2016 Rev - New Wkshp #1 - Compassion Fatigue       | 2,260                 | 16,000         |   | 9,750          |  | 2017 Rev - New Wkshp #1 - Compassion Fatigue 1x          |
| 2016 Rev - New Wkshp #2 - Security                 | 12,650                | 16,000         |   | 12,650         |  | 2017 Rev - New Wkshp #2 - Security                       |
| 2016 Rev - Online Intro to IACUCs                  | 12,600                | 10,800         |   | 12,600         |  | 2017 Rev - Online Intro to IACUCs                        |
| 2016 Rev - Webinar for Pls                         |                       | 2,000          |   | 2,000          |  | 2017 Rev - Webinar for Pls                               |
| 2016-04 Rev - 3 Is Conference                      | 74,808                | 40,000         |   | 54,000         |  | 2017 Rev - 3 Is Conference (moves to Providence, RI)     |
| 2016-04 Rev - Lab Animal Enrichment                | 20,885                | 30,000         |   | 30,000         |  | 2017 Rev - Lab Animal Enrichment                         |
| 2016-05 Rev - 3 Rs Sharing                         |                       | 30,000         | Partner decided not to do the workshop this year                  | 0              |  | 2017 Rev - 3 Rs Sharing - defer, see what NJABR plans    |
| 2016-05 Rev - HYS IBC Symposium                    | 19,518                |                | Unbudgeted - opportunity that developed mid-year                  | 0              |  | 2017 Rev - HYS IBC Symposium (no MSMR fin. Involvement)  |
| Revenue - 2015-06 Vendor Exhibit                   | 1,000                 |                |   | 8,750          |  | 2017 Rev - Vendor Exhibit                                |
| Revenue 2016 Annual Meeting                        | 25,500                | 16,500         |   | 20,500         |  | 2017 Rev - Annual Meeting                                |
| Revenue 2015-10 BMR                                | 4,500                 | 2,500          |   | 4,000          |  | 2017 Rev - BMR   |
| <b>Total 40027 Wksp. Rev., Conf., Annual Meet.</b> | <b>173,721</b>        | <b>178,800</b> |   | <b>162,750</b> |  | <b>Total 40027 Wksp. Rev., Conf., Annual Meet.</b>       |
| <b>40060 Miscellaneous Income</b>                  |                       |                |   |                |  | <b>40060 Miscellaneous Income</b>                        |



|  |                |  |                             |
|--|----------------|--|-----------------------------|
| 40061 Consulting Fees                        |                | 3,000  | 3,000                       |
| 40063 Bank Interest Income                   | 1,277          | 620  | 900                         |
| 40065 Other Misc Income                      | 1,047          | 1,000  | NEBAALAS reimbursement<br>0 |
| <b>Total 40060 Miscellaneous Income</b>      | <b>2,324</b>   | <b>4,620</b>   | <b>3,900</b>                |
| <b>Total 40000 Income Accounts</b>           | <b>513,104</b> | <b>539,370</b>   | <b>485,650</b>              |
| <b>40010 Corporate Grants</b>                |                |  |                             |
| 40011 Restricted                             | 5,000          |  | 5,000                       |
| 40012 Unrestricted                           | 0              | 5,000  | 0                           |
| <b>Total 40010 Corporate Grants</b>          | <b>5,000</b>   | <b>5,000</b>   | <b>5,000</b>                |
|  |                | Reimbursements: Comparative<br>Medicine Reception AVMA |                             |
| Services                                     | 5,734          |  |                             |
| <b>Total Income</b>                          | <b>523,838</b> | <b>544,370</b>   | <b>490,650</b>              |
| <b>Gross Profit</b>                          | <b>523,838</b> | <b>544,370</b>   | <b>490,650</b>              |
| <b>Expenses</b>                              |                |  |                             |
| <b>50000 Expense Accounts</b>                |                |  |                             |
| 50100 Charitable Donations                   | 295            | 800  | 300                         |
| <b>50200 Payroll</b>                         |                |  |                             |
| 50210 Salaries                               | 230,304        | 266,093  | 221,093                     |
| 50215 Payroll Taxes                          | 555            |  |                             |
| 50220 Social Security/ Medicare              | 17,619         | 19,135   | 15,900                      |
| 50250 MA Unemployment                        | 930            | 700  | 773                         |
| <b>Total 50215 Payroll Taxes</b>             | <b>19,105</b>  | <b>19,835</b>  | <b>16,673</b>               |
| <b>50300 Benefits</b>                        |                |  |                             |
| 50305 Insurance                              |                |  |                             |
| 50310 Dental                                 | 2,716          | 3,236  | 2,427                       |
| 50320 Medical                                | 15,739         | 21,300   | 16,773                      |
| <b>Total 50305 Insurance</b>                 | <b>18,454</b>  | <b>24,536</b>  | <b>19,200</b>               |
| 50330 STD/LTD                                | 1,405          | 2,800  | 2,325                       |
| 50340 Workers' Compensation                  | 350            | 700  | 584                         |
| 50370 Retirement                             | 2,042          | 3,600  | 3,600                       |
| <b>Total 50300 Benefits</b>                  | <b>22,251</b>  | <b>31,636</b>  | <b>25,709</b>               |
| 50520 Payroll Processing Fees                | 1,100          | 1,100  | 1,100                       |
| <b>Total 50200 Payroll</b>                   | <b>272,760</b> | <b>318,664</b>   | <b>264,575</b>              |
| <b>50400 Office Operations</b>               |                |  |                             |
| 50380 All other insurances                   | 1,443          | 2,000  | 1,500                       |
| 50325 Directors and Officers                 | 2,980          | 2,500  | 3,000                       |
| <b>Total 50380 All other insurances</b>      | <b>4,423</b>   | <b>4,500</b>   | <b>4,500</b>                |
| 50410 Rent                                   | 19,315         | 21,071   | 21,071                      |
| 50420 Printing and Other Productions         | 655            | 2,000  | 1,200                       |
| 50430 Internet Service Provider              | 355            | 1,000  | 500                         |
| 50431 What A Year!                           |                | 400  | 200                         |
| <b>Total 50430 Internet Service Provider</b> | <b>355</b>     | <b>1,400</b>   | <b>700</b>                  |
| 50440 Telephone                              | 4,375          | 5,800  | 5,000                       |
| 50450 Utilities (HVAC)                       | 2,281          | 2,600  | 2,600                       |
| 50460 Equip./Furniture Purchases             | 524            | 500  | 500                         |

|  |  |  |                |
|--|--|--|----------------|
| 40061 Consulting Fees                        |  |  |                |
| 40063 Bank Interest Income                   |  |  | 900            |
| 40065 Other Misc Income                      |  |  | 0              |
| <b>Total 40060 Miscellaneous Income</b>      |  |  | <b>900</b>     |
| <b>Total 40000 Income Accounts</b>           |  |  | <b>485,650</b> |
| <b>40010 Corporate Grants</b>                |  |  |                |
| 40011 Restricted                             |  |  | 5,000          |
| 40012 Unrestricted                           |  |  | 0              |
| <b>Total 40010 Corporate Grants</b>          |  |  | <b>5,000</b>   |
|  |  | Reimbursements: Comparative<br>Medicine Reception AVMA |                |
| Services                                     |  |  |                |
| <b>Total Income</b>                          |  |  | <b>490,650</b> |
| <b>Gross Profit</b>                          |  |  | <b>490,650</b> |
| <b>Expenses</b>                              |  |  |                |
| <b>50000 Expense Accounts</b>                |  |  |                |
| 50100 Charitable Donations                   |  |  | 300            |
| <b>50200 Payroll</b>                         |  |  |                |
| 50210 Salaries                               |  |  | 221,093        |
| 50215 Payroll Taxes                          |  |  |                |
| 50220 Social Security/ Medicare              |  |  | 15,900         |
| 50250 MA Unemployment                        |  |  | 773            |
| <b>Total 50215 Payroll Taxes</b>             |  |  | <b>16,673</b>  |
| <b>50300 Benefits</b>                        |  |  |                |
| 50305 Insurance                              |  |  |                |
| 50310 Dental                                 |  |  | 2,427          |
| 50320 Medical - assumes 5% increase          |  |  | 16,773         |
| <b>Total 50305 Insurance</b>                 |  |  | <b>19,200</b>  |
| 50330 STD/LTD                                |  |  | 2,325          |
| 50340 Workers' Compensation                  |  |  | 584            |
| 50370 Retirement                             |  |  | 3,600          |
| <b>Total 50300 Benefits</b>                  |  |  | <b>25,709</b>  |
| 50520 Payroll Processing Fees                |  |  | 1,100          |
| <b>Total 50200 Payroll</b>                   |  |  | <b>264,575</b> |
| <b>50400 Office Operations</b>               |  |  |                |
| 50380 All other insurances                   |  |  | 1,500          |
| 50325 Directors and Officers                 |  |  | 3,000          |
| <b>Total 50380 All other insurances</b>      |  |  | <b>4,500</b>   |
| 50410 Rent                                   |  |  | 21,071         |
| 50420 Printing and Other Productions         |  |  | 1,200          |
| 50430 Internet Service Provider              |  |  | 500            |
| 50431 What A Year!                           |  |  | 200            |
| <b>Total 50430 Internet Service Provider</b> |  |  | <b>700</b>     |
| 50440 Telephone                              |  |  | 5,000          |
| 50450 Utilities (HVAC)                       |  |  | 2,600          |
| 50460 Equip./Furniture Purchases             |  |  | 500            |

|  |               |               |  |
|--|---------------|---------------|--|
| Computer hardware                              | 2,237         | 6,000         | 3,000  |
| Computer software                              | 1,005         | 700           | 1,000  |
| <b>Total 50460 Equip./Furniture Purchases</b>  | <b>3,766</b>  | <b>7,200</b>  | <b>4,500</b>                                   |
| 50470 Postage and Shipping                     | 929           | 1,950         | 1,000  |
| 50475 State Fees                               | 374           | 200           | 375  |
| 50485 Equipment Leasing                        | 4,884         | 5,820         | 9,720  |
| 50490 Equipment Repairs                        | 606           | 1,500         | 500  |
|  |               |               | This is where copying overages<br>are recorded |
| 50491 Supplies                                 | 6,787         | 4,300         | 3,000  |
| 50495 Miscellaneous                            | 513           | 1,000         | 600  |
| <b>Total 50400 Office Operations</b>           | <b>49,262</b> | <b>59,341</b> | <b>54,766</b>                                  |
| <b>50500 Professional Services</b>             |               |               |  |
| 50510 Lobbying                                 | 18,000        | 19,400        | 19,400   |
| 50530 Banking Fees                             | 65            |               |  |
| 50540 Auditor                                  | 5,975         | 5,000         | 5,000  |
| 50550 Bookkeeper                               | 2,633         | 3,600         | 3,200  |
| 50560 Designer/ Webmaster/Writer               |               |               |  |
| 50561 MSMR                                     | 14,600        | 18,000        | 18,000   |
| 50562 What A Year!                             | 15,841        | 19,500        | 19,500   |
| 50563 Facebook Webmaster                       | 1,750         | 0             | 0  |
| <b>Total 50560 Designer/ Webmaster/Writer</b>  | <b>32,191</b> | <b>37,500</b> | <b>37,500</b>                                  |
| Outside Workshop - Registration                | 1,605         | 450           | 450  |
| Social Media Manager                           |               | 2,000         | 6,500  |
| <b>Total 50500 Professional Services</b>       | <b>60,468</b> | <b>67,950</b> | <b>72,050</b>                                  |
| 50600 Wksp.,Conf., Annual Meet., Trav          | 2,167         | 2,500         | 2,500  |
| 2015-09 Exp - NEBAALAS Annual Mtg              | 1,047         |               |  |
| 2015-10 Exp - BMR                              | 5,365         | 3,500         | 5,400  |
| 2015-10 Exp - IACUC Best Practices             | 3,915         | 4,000         | 0  |
| 2016 Exp - IACUCs & IBCs                       | 2,175         | 2,500         | 2,200  |
| 2016 Exp - New On-line Course                  |               | 6,000         | 6,000  |
| 2016 Exp - New Webinar #1                      |               | 1,000         | 1,000  |
| 2016 Exp - New Webinar #2                      |               | 1,000         | 0  |
| 2016 Exp - New Wkshp #1 - Compassion Fatigue   | 3,281         | 11,000        | 5,000  |
| 2016 Exp - New Wkshp #2 - Security             | 1,530         | 11,000        | 11,000   |
| 2016 Exp - Online Intro to IACUCs              | 1,304         | 2,800         | 2,500  |
| Consultant Fee                                 | 1,800         |               | 2,400  |
| <b>Total 2016 Exp - Online Intro to IACUCs</b> | <b>3,104</b>  | <b>2,800</b>  | <b>4,900</b>                                   |
| 2016 Exp - Webinar for Pls                     |               | 1,000         | 1,000  |
| 2016-04 Exp - 3 Is Conference                  | 50,308        | 28,000        | 35,000   |
| 2016-04 Exp - Lab Animal Enrichment            | 27,594        | 25,500        | 28,000   |
| 2016-05 Exp - 3 Rs Sharing                     |               | 24,000        | 0  |
| 2016-05 Exp HYS IBC Symposium                  | 19,513        |               |  |
| 2016-06 Exp Annual Meeting                     | 1,250         | 9,000         | 10,000   |
| 50605 Travel and Entertainment                 | 4,344         | 3,500         | 3,500  |
| 50800 Awards                                   |               | 600           | 750  |
| 50810 Student Competition                      |               | 4,500         | 4,500  |

|  |  |  |  |
|--|--|--|--|
| Computer hardware                                      |  |  |  |
| Computer software                                      |  |  |  |
| <b>Total 50460 Equip./Furniture Purchases</b>          |  |  |  |
| 50470 Postage and Shipping                             |  |  |  |
| 50475 State Fees                                       |  |  |  |
| 50485 Equipment Leasing                                |  |  |  |
| 50490 Equipment Repairs                                |  |  |  |
|  |  |  |  |
| 50491 Supplies   |  |  |  |
| 50495 Miscellaneous                                    |  |  |  |
| <b>Total 50400 Office Operations</b>                   |  |  |  |
| <b>50500 Professional Services</b>                     |  |  |  |
| 50510 Lobbying   |  |  |  |
| 50530 Banking Fees                                     |  |  |  |
| 50540 Auditor  |  |  |  |
| 50550 Bookkeeper                                       |  |  |  |
| 50560 Designer/ Webmaster/Writer                       |  |  |  |
| 50561 MSMR   |  |  |  |
| 50562 What A Year!                                     |  |  |  |
| 50563 Facebook Webmaster                               |  |  |  |
| <b>Total 50560 Designer/ Webmaster/Writer</b>          |  |  |  |
| Outside Workshop - Registration                        |  |  |  |
| Social Media Manager                                   |  |  |  |
| <b>Total 50500 Professional Services</b>               |  |  |  |
| 50600 Wksp.,Conf., Annual Meet., Trav                  |  |  |  |
| 2017 Exp - NEBAALAS Annual Mtg (no MSMR involvement)   |  |  |  |
| 2017 Exp - BMR   |  |  |  |
| 2017 Exp - IACUC Best Practices (not here in 2017)     |  |  |  |
| 2017 Exp - IACUCs & IBCs                               |  |  |  |
| 2017 Exp - New On-line Course (Intro. To IBCs)         |  |  |  |
| 2017 Exp - New Webinar #1                              |  |  |  |
| 2017 Exp - New Webinar #2 - defer                      |  |  |  |
| 2017 Exp - New Wkshp #1 - Compassion Fatigue           |  |  |  |
| 2017 Exp - New Wkshp #2 - Security                     |  |  |  |
| 2017 Exp - Online Intro to IACUCs                      |  |  |  |
| Consultant Fee   |  |  |  |
| <b>Total 2016 Exp - Online Intro to IACUCs</b>         |  |  |  |
| 2017 Exp - Webinar for Pls                             |  |  |  |
| 2017 Exp - 3 Is Conference (in Providence, RI)         |  |  |  |
| 2017 Exp - Lab Animal Enrichment                       |  |  |  |
| 20175 Exp - 3 Rs Sharing (defer, see what NJABR plans) |  |  |  |
| 20175 Exp HYS IBC Symposium (no MSMR fin. Involvement) |  |  |  |
| 2017 Exp Annual Meeting                                |  |  |  |
| 50605 Travel and Entertainment                         |  |  |  |
| 50800 Awards - Levenson, misc                          |  |  |  |
| 50810 Student Competition                              |  |  |  |

|   |         |                                |         |  |
|---|---------|--------------------------------|---------|--|
| Total 50800 Awards                          | 0       | 5,100                          | 5,250   | Total 50800 Awards                                       |
| Expense - Board/Committee Mtg               | 475     |                                |         | Expense - Board/Committee Mtg                            |
| Expense - Vendor Fair                       |         |                                |         | Expense - Vendor Fair                                    |
| Total 50600 Wksp.,Conf., Annual Meet., Trav | 126,068 | 139,400                        | 120,750 | Total 50600 Wksp.,Conf., Annual Meet., Trav              |
| 51000 Dues and Subscriptions                | 4,633   | 3,500                          | 3,500   | 51000 Dues and Subscriptions (includes on-line services) |
| 52000 Books and Other Publications          | 205     |                                | 100     | 52000 Books and Other Publications                       |
| Total 50000 Expense Accounts                | 513,691 | 589,655                        | 516,041 | Total 50000 Expense Accounts                             |
| 50900 Advertising                           | 918     | 1,200                          | 1,200   | 50900 Advertising  |
| Bank Fees                                   | 110     |                                | 50      | Bank Fees  |
| Expenses to be Reimbursed                   | -313    |                                |         | Expenses to be Reimbursed                                |
| Interest Paid                               | 358     |                                | 0       | Interest Paid  |
| PayPal Fees                                 | 1,321   | 1,200                          | 1,200   | PayPal Fees  |
| Unapplied Cash Bill Payment Expense         | 4,492   |                                |         | Unapplied Cash Bill Payment Expense                      |
| Uncategorized Expense                       | 6,314   | Comparative Medicine Reception |         | Uncategorized Expense                                    |
| Total Expenses                              | 526,890 | 592,055                        | 518,491 | Total Expenses   |
| Net Operating Income                        | -3,053  | -47,685                        | -27,841 | Net Operating Income                                     |
| Net Other Income                            | 0       | 0                              | 0       | Net Other Income   |
| Net Income                                  | -3,053  | -47,685                        | -27,841 | Net Income   |

Legislation – Patrick Huntington, JD, Massachusetts Bay Associates

**SB 876 – Private Cause of Action to Prevent the Cruel & Inhumane Treatment of Animals**

This bill would allow any individual, including those who have no legal interest or possession rights in an animal, to bring a private cause of action for the protection and humane treatment of animals. The action may be brought against any individual or entity that has possession of an animal and is believed to have engaged in cruel or inhumane treatment of an animal or animals.

Status: The Committee on The Judiciary held a public hearing on October 21, 2015. On April 4, 2016 the committee placed this bill into a committee study order which effectively ends the consideration of this bill for the current legislative session.

**HB 224– An Act to Establish a Subsidiary Board for Veterinary Technology**

This bill seeks to create a Subsidiary Board of Veterinary Technology under the Board of Registration in Veterinary Medicine. It would require licensed veterinary technicians to hold an associate or bachelor degree in veterinary technology from an institution accredited by the American Veterinary Medical Association. All employed, non-licensed veterinary technicians who have not received or enrolled to obtain a formal degree by January 1, 2018 would be prohibited from working as a veterinary technician but could perform the duties of veterinary assistant. Technicians who work at research institutions would be exempt from the educational requirements of this section. The research institution would be required to be accredited by AALAC. MSMR opposes this restrictive accreditation requirement and supports the use of the current definition of research definition that is contained in C. 140, S. 136A of the General Laws.

Status: The Committee on Consumer Protection and Professional Licensure held a public hearing on June 2, 2015. On March 16, 2016 the committee placed this bill into a committee study order.

**HB 1385 – An Act Establishing a Public Registry of Animal Abusers**

This bill seeks to create an Animal Abuser Registry Board within the Criminal History System Board. The Board would be responsible for maintaining a central computerized registry of all animal abusers who have been found to have violated the animal cruelty statutes of Massachusetts or any other state. A convicted animal abuser will be required to register with the sheriff of the county in which the abuser is located. The abuser must provide personal information, the name of his or her employer and a list of the animal abuse convictions. Any person who knowingly violates the provisions of this proposed law would be guilty of a felony. The information contained in the registration will be a public record and made available to the public through internet, telephone and written access. The sheriff is directed to contact every residence, school, humane society, animal shelter and any other business within a half mile radius of the animal abuser's residence or location.

Status: The Committee on The Judiciary held a public hearing on October 21, 2015. On March 16, 2016 the committee placed this bill into a committee study order,

**HB 1848 – An Act to Ensure Adequate Care of Animals in Cities and Towns**

This bill amends the current "Cruelty to Animals" statute which would apply the penalties contained in MGL, C. 272, S. 77 to a person in custody of an animal who "knowingly and unjustifiably fails to provide the animal with veterinary care that result in unnecessary suffering." The current statute generally deals with actions which over-works, tortures or deprive animals of necessary sustenance.

Status: The Committee on Municipalities and Regional Government held a public hearing on January 21, 2016. On March 16, 2016 the committee placed this bill into a committee study order.

### **HB 1945 – Regulating the Siting and Operation of Biological Research Facilities**

This bill would require the Department of Public Health to establish a Biological Agents Registry Program for determining the various reporting requirements for biological agents and toxins. The entities required to receive this information will include local boards of health, law enforcement officials and other public health entities. This bill also establishes a High Containment Biological Research Laboratory Health and Safety Program for BSL3 or BSL4 laboratories. This program shall develop standards for siting laboratory locations, as well as for their operation, maintenance, security, oversight and the inspection of such laboratories. The program will also develop plans for the reporting of any exposure of pathological biological agents to workers or to the general public. Each municipality in the Commonwealth shall have the authority to regulate and prohibit high containment biological research laboratories within its jurisdiction.

Status: The Committee on Public Health held a public hearing on May 5, 2015. On March 15, 2016 the committee placed this bill into a committee study order.

### **Legislation in the other New England states and New York**

#### **Connecticut**

[\*\*HB 5344\*\*](#) - **Animal advocates** - permits the use of animal advocates in certain legal proceedings relating to neglected or cruelly treated animals. Public hearing 2/24/16. Joint favorable substitute filed with legislative commissioner's office. (3/29/16). Recommended to be held for further study and referred to office of legislative research and office of fiscal analysis (04/12/16). File #591. Voted on and passed by House and Senate and signed into law by the Governor (6/1/16).

#### **New Hampshire**

[\*\*HB 1615\*\*](#) - **Regulating the transfer of dogs from out of state** - Defines *Animal Importers* and lays out requirements and restrictions. Currently referred for Interim Study.

#### **New York**

[\*\*SB 98\*\*](#) - **Mandatory adoption** - Requires research dogs and cats at certain facilities to be offered for adoption through private placement or a non-profit animal rescue and shelter organization. This bill has passed the Senate and has been delivered to the Assembly and referred to the Committee on Higher Education. Approved by both Houses and delivered to the Governor,

[\*\*AB 1679\*\*](#) - **Devocalization** - Restricts the performance of surgical devocalization procedures on dogs and cats.

[\*\*AB 343\*\*](#) – **Animal crime conviction database** - Relates to the creation of a crime database of all convictions in New York state of animal cruelty, fighting, neglect, abandonment and mistreatment; makes such crime database available to all law enforcement entities, district attorneys, duly incorporated humane societies, societies for the prevention of cruelty to animals, dog or cat protective associations and animal control officers. Referred to Agriculture.

[\*\*AB 346\*\*](#) - **Animal abuse task force** - establishing a task force to study how to improve investigations of animal abuse and enforcement of anti-animal abuse laws.

#### **Rhode Island**

[\*\*H 7061\*\*](#) - **Relating to dogs** - Requires that the sheltering and nourishment of dogs conform to the industry standards established by the Tufts animal care and conditions scale regarding outside sheltering, proper nourishment, sanitary conditions, and physical condition. Now with the House

Health Education and Welfare Committee and scheduled for a hearing on 2/24/16. Unlikely to affect research but could, in a stretch.

**H 7414 - Animal abuser registry** - Creates the "Animal Abuser Registry Act" which would require all persons convicted of animal abuse to register with an online registry to be established and maintained by the attorney general's office. Referred to House Judiciary Committee - recommends hold for further study.

**H 7324 - Unlawful confinement** - This act would make changes to and clarify the definition of what constitutes unlawful confinement of a "Covered animal", to include any sow during gestation, calf raised for veal or egg-laying hen kept on a farm, and would apply them throughout the chapter accordingly. Referred to the Committee on the Environment and Natural Resources.

**S 2657 - Relating to animals and animal husbandry - cruelty to animals** - Increases the penalties for animal cruelty if the animal dies as a result. Exempts research universities, colleges and hospitals if they are licensed or inspected by the USDA or the Public Health Service. Does not exempt businesses. Referred to the Judiciary committee. Placed on Senate Calendar (4/26).

**H 7831 – Relating to animals and animal husbandry** - This act would raise the level of care required for animals being offered for sale and in facilities holding stray animals. It would increase penalties for those who mistreat animals in such facilities. Exempts “research laboratories or facilities of any hospital, college or university within the state.” Recommended for passage. (3/29/16) and placed on House calendar.

**H 7958 – Animal Advocates** - In any case, before any court, in which the custody or wellbeing of an animal is at issue, the court shall appoint an animal advocate to make recommendations regarding the welfare of the animal. Exempts facilities licensed by the USDA or with a PHS assurance. House Judiciary Committee hearing 3/30/16 – committee recommends hold for further study. Approved by both houses and signed by the Governor.

#### **Vermont**

**H 512 - Adequate shelter of cats and dogs** - Introduced on 1/5/16 by Representative John Bartholomew and currently referred to the committee on Agriculture & Forest Products. It defines adequate care along several dimensions shelter, food, water. According to NABR's, analysis, this bill would not fall under the research exemption in Vermont. 4/19/2016 S Favorable report with proposal of amendment by Committee on Judiciary.

#### Major Projects and Goals for 2016

To implement the Strategic Plan items and to completely redesign and relaunch the MSMR website.

#### Student Competition Results

1 entry to the Level I (middle school) competition from 1 home school student

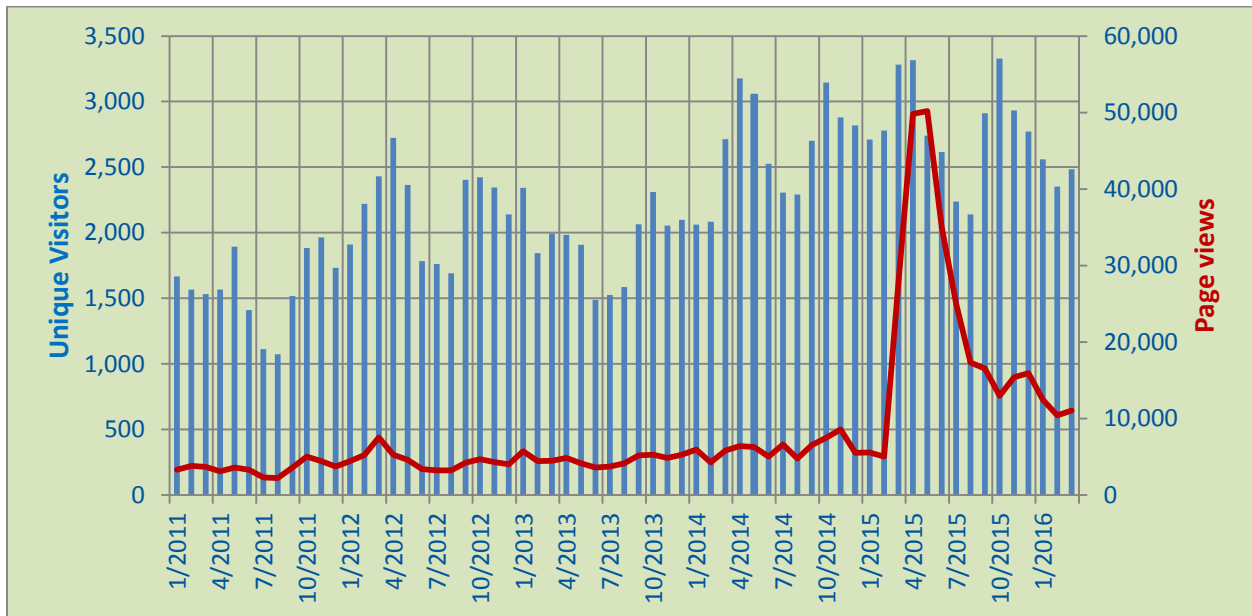
88 entries to the Level II (high school) competition from 6 schools

Most of the winning students and their parents and teachers will be honored at the Luncheon beginning at noon. Poster versions of their work are displayed in the foyer of the Huntington Ballroom.

Miscellaneous

Basic statistics for [www.MSMR.org](http://www.MSMR.org) and for [www.WhatAYear.org](http://www.WhatAYear.org)

[www.WhatAYear.org](http://www.WhatAYear.org)



[www.MSMR.org](http://www.MSMR.org)

